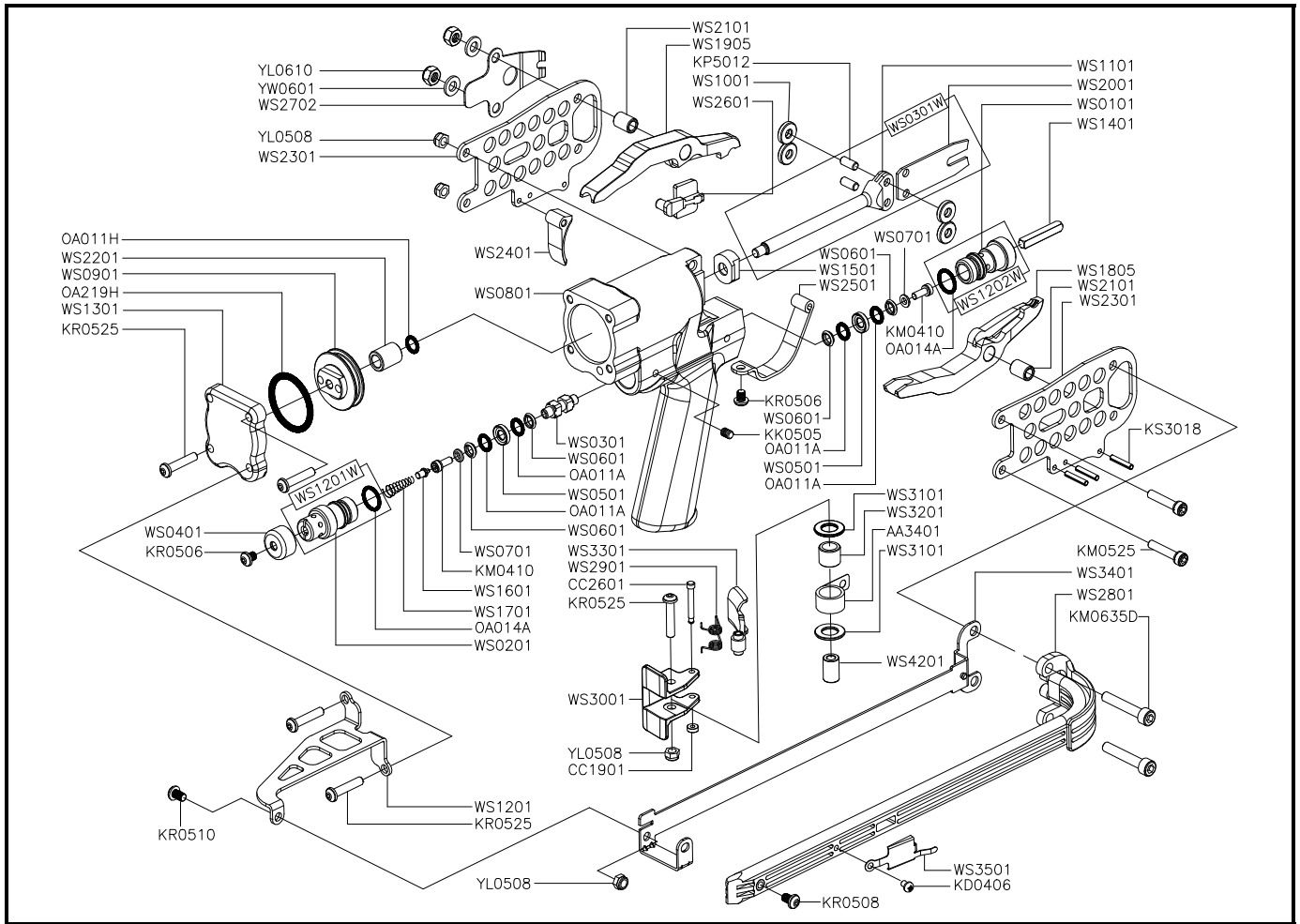


TH-T-SC7C

C



| Part_No | Description | Spec | Q'ty | Part_No | Description | Spec | Q'ty | Part_No | Description | Spec | Q'ty |
|--------------------|---------------------|--------------|------|--------------------|---------------------------|------|------|-------------------|---------------|--------|------|
| TH-P-SC7C- AA3401 | PUSHER SPRING | | 1 | TH-P-SC7C- WS0401 | EXHAUST CAP | | 1 | TH-P-SC7C- WS2401 | TRIGGER | | 1 |
| TH-P-SC7C- CC1901 | BUSHING | | 1 | TH-P-SC7C- WS0501 | O-RING SEAT | | 2 | TH-P-SC7C- WS2501 | GUARD TRIGGER | | 1 |
| TH-P-SC7C- CC2601 | PIN | | 1 | TH-P-SC7C- WS0601 | O-RING CAP | | 4 | TH-P-SC7C- WS2601 | LATCH | | 1 |
| TH-P-SC7C- KD0406 | SCREW | #4x6 TP | 1 | TH-P-SC7C- WS0701 | SPACER | | 2 | TH-P-SC7C- WS2702 | PLATE | | 1 |
| TH-P-SC7C- KK0505 | HEX.SOC.SET SCREW | M5x0.8 - 5L | 2 | TH-P-SC7C- WS0801 | BODY | | 1 | TH-P-SC7C- WS2801 | MAGAZINE SEAT | | 1 |
| TH-P-SC7C- KM0410 | HEX.SOC.HD.BOLT | M4x0.7 - 10L | 2 | TH-P-SC7C- WS0901 | MAIN PISTON | | 1 | TH-P-SC7C- WS2901 | SPRING | | 1 |
| TH-P-SC7C- KM0525 | HEX.SOC.HD.BOLT | M5x0.8 - 25L | 2 | TH-P-SC7C- WS1001 | ROLLER | | 4 | TH-P-SC7C- WS3001 | SEAT | | 1 |
| TH-P-SC7C- KM0635D | HEX.SOC.HD.BOLT | M6x1.0 - 35L | 2 | TH-P-SC7C- WS1101 | ROD PISTON | | 1 | TH-P-SC7C- WS3101 | ROLLER | | 2 |
| TH-P-SC7C- KP5012 | PARALLEL PIN | 5x12L | 2 | TH-P-SC7C- WS1201 | SUPPORT | | 1 | TH-P-SC7C- WS3201 | ROLLER | | 1 |
| TH-P-SC7C- KR0506 | BUTTON HD.BOLT | M5x0.8 - 06L | 2 | TH-P-SC7C- WS1201W | TRIGGER VALVE GUIDE ASSY. | | 1 | TH-P-SC7C- WS3301 | PUSHER | | 1 |
| TH-P-SC7C- KR0508 | BUTTON HD.BOLT | M5x0.8 - 08L | 1 | TH-P-SC7C- WS1202W | TRIGGER VALVE GUIDE ASSY. | | 1 | TH-P-SC7C- WS3401 | SUPPORT | | 1 |
| TH-P-SC7C- KR0510 | BUTTON HD.BOLT | M5x0.8 - 10L | 1 | TH-P-SC7C- WS1301 | CYLINDER CAP | | 1 | TH-P-SC7C- WS3501 | STOPPER | | 1 |
| TH-P-SC7C- KR0525 | BUTTON HD.BOLT | M5x0.8 - 25L | 5 | TH-P-SC7C- WS1401 | TRIGGER VALVE STEM | | 1 | TH-P-SC7C- WS4201 | ROLLER ANCHOR | | 1 |
| TH-P-SC7C- KS3018 | SPRING PIN | 3-18L | 3 | TH-P-SC7C- WS1501 | DUST-COLLECTING CAP | | 1 | TH-P-SC7C- YL0508 | LOCK NUT | M5x0.8 | 4 |
| TH-P-SC7C- OA011A | O-RING | ARP568-011 | 4 | TH-P-SC7C- WS1601 | SPRING SEAT | | 1 | TH-P-SC7C- YL0610 | LOCK NUT | M6x1.0 | 2 |
| TH-P-SC7C- OA011H | O-RING | 7.65x1.78 | 1 | TH-P-SC7C- WS1701 | COMPRESSION SPRING | | 1 | | | | |
| TH-P-SC7C- OA014A | O-RING | ARP568-014 | 2 | TH-P-SC7C- WS1805 | PAWL LOWER | | 1 | | | | |
| TH-P-SC7C- OA219H | O-RING | 32.92x3.53 | 1 | TH-P-SC7C- WS1905 | PAWL UPPER | | 1 | | | | |
| TH-P-SC7C- WS0101 | TRIGGER VALVE GUIDE | | 1 | TH-P-SC7C- WS2001 | DRIVER | | 1 | | | | |
| TH-P-SC7C- WS0201 | TRIGGER VALVE GUIDE | | 1 | TH-P-SC7C- WS2101 | CAP | | 2 | | | | |
| TH-P-SC7C- WS0301 | TRIGGER VALVE SEAT | | 1 | TH-P-SC7C- WS2201 | CAP | | 1 | | | | |
| TH-P-SC7C- WS0301W | DRIVER ASSY. | | 1 | TH-P-SC7C- WS2301 | SIDE PLATE | | 2 | | | | |

If you need to order parts, please mark both Parts No. and Description.